



Poynton u3a News

poyntonu3a.org.uk

Issue 45-3

20th Dec 2024

Poynton u3a Update

Poynton u3a Membership Renewal

The Basics

The fee for Poynton u3a renewals for 2025 will remain at **£10 per annum**.

Your current membership expires on December 31, 2024. Strictly, you need to renew your membership before taking part in any activities in 2025. However, to allow for any delays during the renewal process, your 2024 membership card will be accepted as proof of membership during the month of January.

Once you receive your new membership card, you need to have it available to show it at General Meetings or if requested by a Group Organiser.

The Options

This year there is the option of an additional method of payment and an option for a different type of membership card. The additional payment option is to use bank transfer to make your payment. The additional type of membership card is an electronic membership card.

Bank Transfers

If you choose to pay by bank transfer, **do not make your payment before 1st January**.

The necessary bank details are

Account: For these details you need to contact the Membership Secretary using membership@poyntonu3a.org.uk

Sort code:

Account number:

Electronic Membership Cards

If you choose to receive an electronic membership card, this will be sent to you as a 'jpg' file attached to an email. You will need to store this file where it can be easily found so that you can display the card when required.

The additional options are designed to make renewing simpler and cheaper if you have the necessary technology. However, they mean the renewal instructions are a bit more complicated than previously. Because of this, the instructions are being presented in two different formats – first in the traditional way and then as a flowchart.

Make a payment by BACS bank transfer, cheque or cash	
BACS bank transfer	
Alternatively, the Membership Secretary will email you the relevant bank details on request. Use your membership number(s) as the payment reference. If you have any changes to your contact details, email them to the Membership Secretary.	
Cheque or Cash	
Enclose a cheque (made payable to Poynton u3a) or cash with a paper form application. This may be a printed version of the form below or, if you have no printer, a hand-written version,	
1	Hand to the Membership Secretary at a General Meeting.
or 2	Send or deliver to the Secretary at 72 Clifford Road, Poynton, SK12 1JA

Receive your electronic or paper membership card	
Electronic Membership Card	
This is the default. If you do not indicate otherwise, an electronic membership card will be sent to the email address on our database.	
Paper Membership Card	
1	Collect it from the Membership Secretary at a General Meeting
or 2	Enclose a stamped self-addressed envelope with your paper application. If you are paying by BACS, add 85p to your membership fee.

POYNTON u3a MEMBERSHIP RENEWAL FORM - £10 for 2025

Title First Name Family Name

Membership Number Paper or Electronic Card

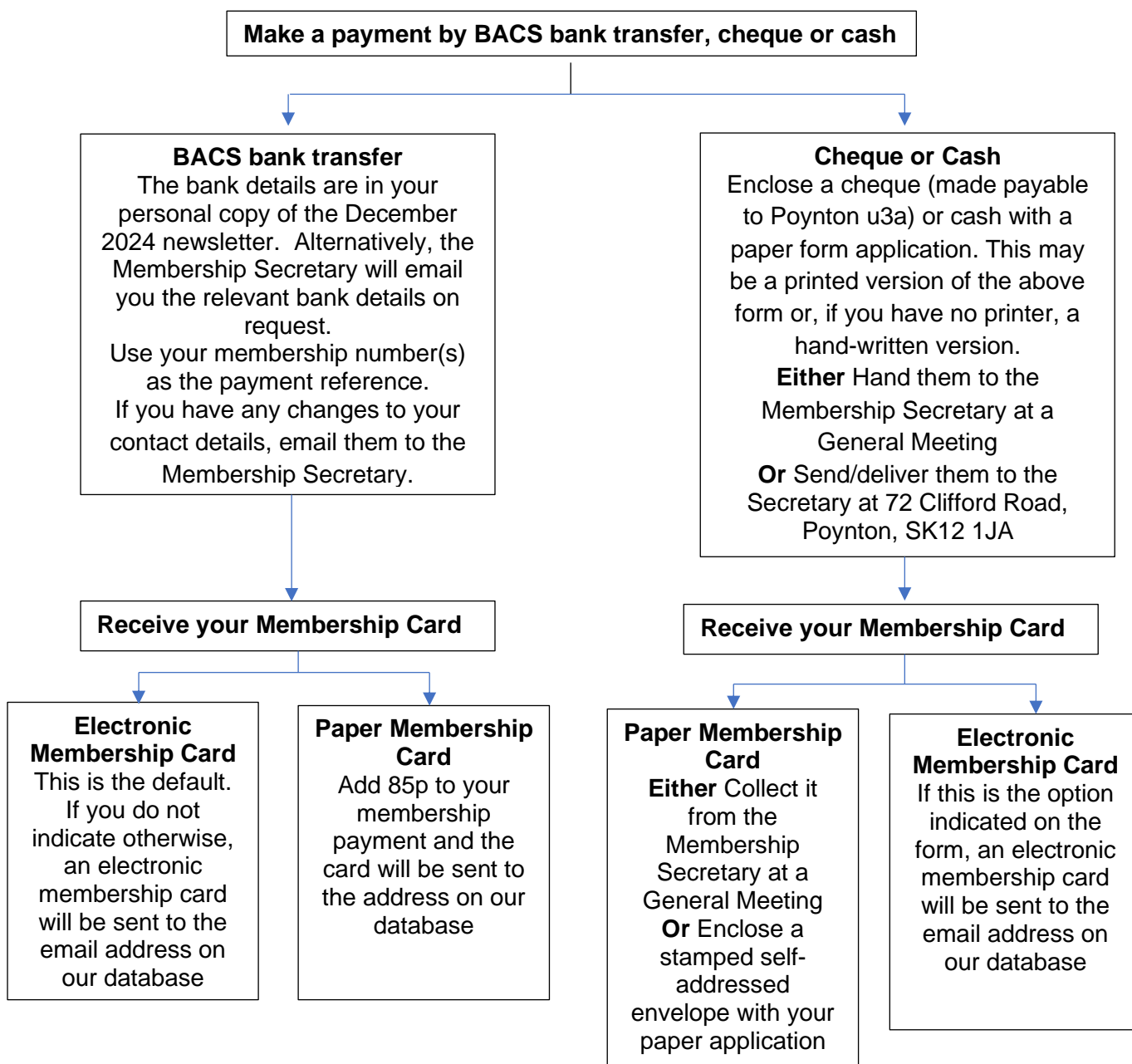
Please list any changes to your contact details (including changes to your email address)

.....

(These details will not be passed on or used in any other context apart from u3a activities/information of interest to members)

Note: It is the responsibility of members to notify the u3a of any changes in the personal details which they have provided (Constitution 5.v).

Alternatively, you may wish to follow the flowchart below.



If none of the above makes any sense, do what you have always done

Send: (if possible, by January 31st)

- 1. Your name and membership number if known**
- 2. Stamped addressed envelope (SAE) and**
- 3. Cheque for £10 made payable to “Poynton u3a” (Recommended) or cash to Poynton u3a Secretary, 72 Clifford Road, Poynton SK12 4NS (or alternatively hand your renewal to the Membership Secretary at a General Meeting).**

If there are any changes to your membership details, please ensure these are included as well. Members with a printer can use the form at the bottom of page 2. If you have no access to a printer, the details requested may be written by hand and enclosed with the fee and SAE.

Without a SAE, you will not receive a membership card.

If you cannot use the above system for whatever reason and you want to renew, please contact the Membership Secretary by email (membership@poyntonu3a.org.uk).

General Meetings – Programme for 2025

Below are the events planned for 2025. We will have a speaker unless stated otherwise.

January 21 st	James Cretney	The Blood Bikes
February 18 th	Garry Rogers	Undercover Policing and the Corrupt Secret Society Within
March 18 th	AGM	
April 15 th	Rebecca Done	Music Through the Decades
May 20 th	Gerry Hambridge	Gerry's Uganda Adventures
June 17 th	Nayab Gill	Legacy Fortress for Generations
July 15 th	Jo Rodman	Just Ice
August 19 th	Philip Lawrence	Scam Awareness
September 16 th	TBA	
October 21 st	Frank Vigon	Strange Birth of British TV
November 18 th	TBA	
December 16 th	Christmas Meeting	

Remember that car parking charges have applied since the start of December to the part of the Civic Hall car park governed by Cheshire East. The other part is for customers of Waitrose. The Cheshire East spaces are indicated with a large 'P' painted on the ground in the parking space; the Waitrose spaces are left blank. The rules for parking in the Waitrose spaces remain as before, that is, parking is free and is for a maximum of two hours.

We have attempted to collect together information on the current rules for the charging system in the Cheshire East part. This is on pages 11 and 12. For the most up-to-date information, please check the notices in the car park.

Members' Contributions

My solo trip to Minnesota – Part 2

Day seven already! I left Duluth and set off along the Lake Superior North Shore Scenic Drive. It lives up to its name.

My first stop was at Two Harbors, where I hiked a trail around Gooseberry Falls. I didn't see any of the fruits thankfully - my mother warned me against their bushes if I didn't want a baby. I'm more than happy with my two, thanks. It was the perfect walk for me - lots of rocks and tree trunks to negotiate, lots of flowing water. Occasional friendly people exchanging greetings with me.



*Gooseberry Falls
State Park*



I love this terrain!



*I had no child so I had to go
it alone.*

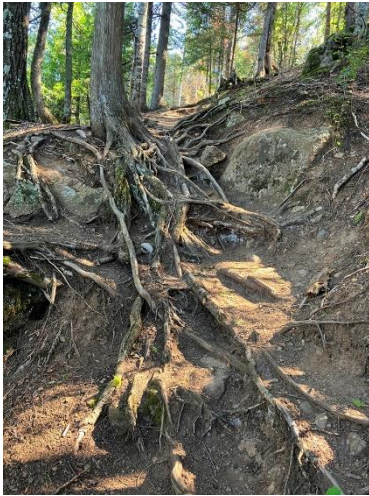
Then onward, stopping at a little beach on Beaver Bay to dip my toes in the water. I enquired why some guys were poking about the shingle with sticks; collecting Lake Superior agate apparently.

Finally, on to my stop for two nights near Tofte. I have a balcony right on the lakeside. How lucky am I?

Day eight. A gentler day in mind, I took a ride on the Summit Express Gondola up to Moose Mountain. A beautiful ride down into valleys and up steep hillsides. I started hiking the Moose Loop Trail at the top - about 3.5 miles. When I had only progressed 0.4 miles in 30 minutes, and had negotiated some fairly dodgy steep slippery terrain, I put on my rarely used sensible hat, thought "maybe I shouldn't be doing this alone?" (I had encountered no others on the trail) and turned back. Lunch at the summit café was the much better option!



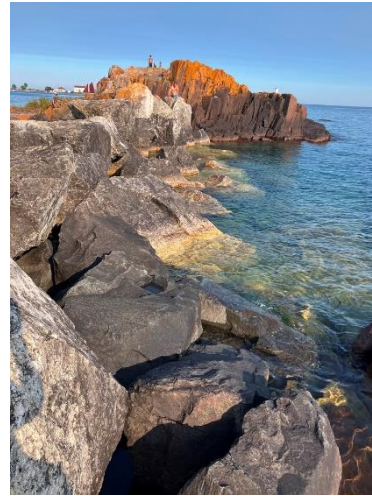
Gondola up Moose Mountain; spot the ghost



*Moose Loop Trail -
steeper than it looks*



*Grand Marais, on the north
shore of Lake Superior*



*A rocky scramble at Grand
Marais*

I had a long, very interesting conversation with a lady, which led to her explaining why she was intending to vote for Trump. She acknowledged his many character flaws but said she would vote for policy rather than person, and, as a farmer, she believes his administration would benefit the country. She asked me to share this with my friends back home. I then ventured further along the North Shore to the lakeside town of Grand Marais. This turned out to be a little gem. A walk around the bay to the lighthouse involved lots of scrambling over rocky outcrops, with Lake Superior on one side and the pretty harbour on the other. Then back to my lakeside hotel to watch the highlights (?) of England's lost test match. [That will be cricket, England v Sri Lanka – Ed]

Moving south-westward tomorrow...

Day nine. At breakfast a lady told me that the colourful trees I'd seen on the mountainside the day before were maples, and that in a couple of weeks or so they would have changed from orange to a deep red. But it would also start getting REALLY cold. (I'm nearly in Canada here!).

Reluctantly leaving the largest lake in the world behind, I drove for 90 minutes, tootling along at 55mph, seeing only four other cars in all that time.

I stopped in a small town called Virginia for a chocolate milk shake break, then continued on to Grand Rapids, where I found an old favourite restaurant chain - Applebee's. After some delicious baby back ribs (half rack) I needed exercise, so I continued to Pokegama Dam; turned out I was back by the Mississippi River.

I followed the Bass Brook walking trail, which was completely different from yesterday's abortive attempted hike at Moose Mountain. This trail was on the flat, through woodland. A chipmunk crossed the path in front of me, to my delight. It teased me by posing for a moment, then disappeared before I could get my camera rolling.

Bass Brook walking trail sans chipmunk



After checking in to my hotel I wandered across the road to a Veterans' Memorial Park and watched the reflection of the setting sun on the river.

Day ten. A very misty morning - driving with headlights, wearing a light jacket on first arriving in Bemidji - a lovely town on the lakeside.

It soon cleared, happily, and I explored a sculpture trail which meant I walked along all the streets in "downtown". I nearly had a heart attack at a traffic light - I pressed the button to cross and (figuratively!) jumped out of my skin when the button screamed "WAIT!" at me!

After a picnic lunch beside Bemidji Lake - part of ... yes, the Mississippi River ... I drove to the local state park, to walk the trail to the Big Bog Lake. I'm ashamed to say that the Englishwoman on the gate and I had a childish snigger at the name, to her colleagues' bemusement.

A short easy walk, so I then continued on the Rocky Point Interpretive Trail. I'm not sure what was interpretive about it, but I enjoyed it, particularly because I ran three times into the same couple with a beautiful husky dog, with the result that we stopped to chat. He (the man, not the dog) suggested that I may have been walking in circles, which I thought eminently possible.

Back at the Tourist Information Centre I signed my name in the visitors' book, directly under a couple from Manchester, NH!

Bemidji is full of sculptures and information about the legendary giant Paul Bunyan and the blue ox "Babe". Talk about tall stories, hyperbole at its best. Four more full days to go, time is rushing by.

Paul Bunyan and Babe - a tall tale in Bemidji

Cecilia Storr-Best

(Part 3 of Cecilia's Diaries in the next issue)



As a follow-on to the article in last month's newsletter on **The History of the Lion Salt Works**, we now have the consequences of salt mining in the Northwich area.

Subsidence

Salt mining and brine extraction in and around Northwich led to extensive land subsidence. Early miners frequently left insufficient pillars to support the roofs of mines. This led to collapses and sometimes water broke through which dissolved the salt pillars and caused the ground to cave in. Brine extraction had the same effect. When the brine was pumped out of the underground caverns, fresh water flowed in to replace it, dissolving the salt supporting the ground above. Large areas of land would disappear, sometimes leaving holes hundreds of feet deep. Some of these holes flooded and became known as flashes.

Two of the area's most significant mines were in the area now known as Ashton's and Neuman's flashes. The Platt's Hill and Dunkirk mines were owned by Mr Ashton and Mr Neuman, and were so extensive that houses and businesses for the workers grew up around them.

The thriving community was well settled until 8th December 1880, when at a little before 8am a great rumbling and roaring was heard as the waters of both the Wade and Witton Brooks poured into a crack which had opened up in the earth. Water rushed below ground and nearby flashes exploded, throwing wet earth several metres into the air. As the panic subsided, it became apparent that part of Ashton's salt works had collapsed into a great hole and the subsiding ground edged ever nearer to the town of Northwich.



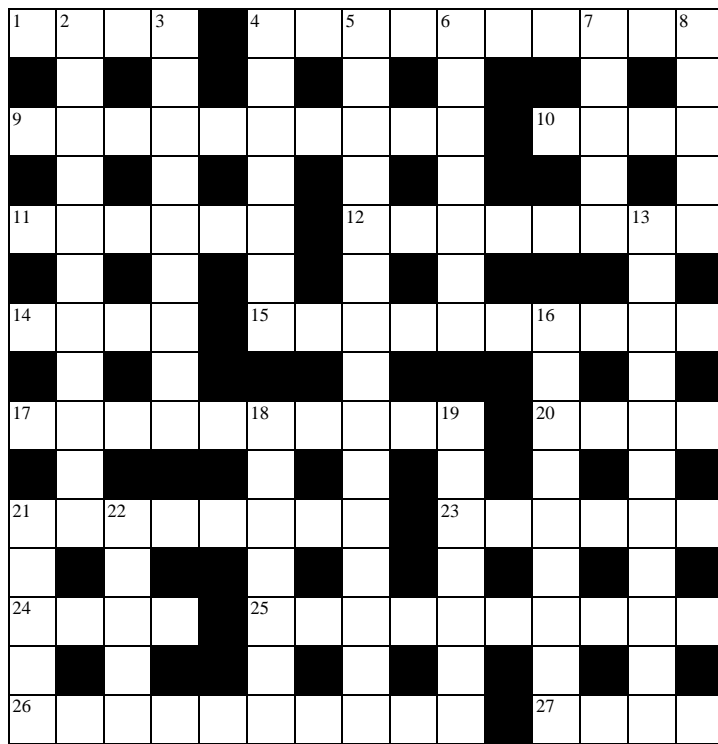
The effect was devastating to the community. The subsidence occurred over such a wide area that the road between Northwich and Warrington eventually had to be rerouted. The flooded area was partially reclaimed by the tipping of lime waste from the local chemical industry, but the pools known now as Ashton's and Newmann's flashes remain.

In 1907, the Marston Halt mine collapse caused part of the Trent and Mersey canal to subside. Boats and barges were submerged by the collapsing banks. It took two weeks for workers to repair the canal to enable transport to commence again

Derek Gatenby

Things to Do

Crossword No. 59



ACROSS

1. Composer dropped in for a bite to eat (4)
4. Tailored suits come with alteration initially discussed (10)
9. Rugby player put away about data processing one to appease (10)
10. Final word is not quite correct (4)
11. Assume leading role at school: wield the axe! (6)
12. Female in metallic fabric, not good for ex (3,5)
14. Ring from Lima leaving greeting (4)
15. Slow to see accident as British capital drawn into fight (10)
17. Criminal given tail's finding group after him? (10)
20. Husband in peruke, a politician once (4)
21. Daily column includes a form of art (8)
23. Exact retribution for destruction of Geneva (6)
24. Oxygen absorbed by beer plant (4)
25. Pedant and stoic clash explosively (10)
26. Rule facing drivers left in M1 despite getting diverted (5,5)
27. My good man, regularly seen as a wise guy in famous films (4)

DOWN

2. Sauce ingredient, bay perhaps, I'd switched during outbreak (11)
3. Burst pipe blocked with old Argentinian meat (9)
4. Dodgy doctor ingesting drug for French department (4,3)
5. Blame the frost? He's upset about a Christmas bloom (4,2,9)
6. Late deliveries expected (7)
7. Bird no longer living on S American islands (5)
8. Slow learner caught dipping into sci-fi classic (5)
13. Doctor, cold, with Elvis and Charlie Parker producing flyer (11)
16. American territory that's just off 'The Needles'? (3,6)
18. Excitement of love in Laura's unexpected (7)
19. Red claret's drunk (7)
21. After tea, map makers cause havoc (5)
22. Make good from A to B for example (5)

Submitted by **Nigel Burin**. If you are interested in being part of the u3a group that compile crosswords, please contact Nigel via groups@poyntonu3.org.uk.

The solution to Crossword No 58 was in the September edition of the newsletter.

Sudoku No 56

			8			3		
8	5					7		
7		3		6			1	
					3	4		
6					1		8	
	7	1			2			
	4			1		6		
1							5	
	2		4	7				

Fill the grid so that each row, column and 3x3 box contains the numbers 1-9

Below is the solution to No 55

6	1	7	8	4	2	3	5	9
8	9	4	7	5	3	6	1	2
3	5	2	1	6	9	8	4	7
9	3	8	5	7	1	2	6	4
7	2	1	4	3	6	9	8	5
4	6	5	9	2	8	1	7	3
5	8	9	3	1	4	7	2	6
1	7	6	2	9	5	4	3	8
2	4	3	6	8	7	5	9	1

More quiz questions from Hooha.

1. How many Harry Potter books have been written by JK Rowling?
2. In what year was the first Juke Box installed?
3. In which year did the National Memorial Arboretum in Staffordshire open?
4. What was the original name for the game Bingo?
5. Who is known as the Father of English Poetry?

Below are the answers to the questions in the previous edition.

1. Who is the author of the TV series Happy Valley?
Sally Wainwright
2. What colour is an aeroplane's black box?
Orange
3. Which football team does Vincent Kompany manage?
Bayern Munich
4. Where is the most northern cathedral in the British Isles?
St Magnus in Kirkwall, Orkney
5. What is the collective noun for a group of crows?
A murder

Poynton Civic Centre Car Parking

The car parking charges for the Civic Centre introduced by Cheshire East Council commenced on 2nd December. Having seen several bemused people wandering around the car park having parked their cars, it would appear that it is better to arrive knowing basically what to expect. Below is a collection of information from the site.

The intention was to use a picture of the main sign to show the Terms and Conditions but the "small print" was too small to be readable so here is a transcript – Ed.

<p>Blue Badge holders park for free when clearly displaying a valid blue badge.</p> <p>Motorcycles - free parking in designated bays.</p> <p>Motorcycles are permitted in standard bays, but must pay appropriate tariff. (see ticket machine for payment options)</p> <p>Vans and camper vans (tariff is payable for each bay used) No camping or sleeping.</p>	<p>Welcome To Civic Hall Car Park PAY & DISPLAY</p> <p>LONG STAY</p> <p>Charging days & hours - Mon-Sat 8am-6pm Parking places controlled all days, all hours</p> <p>CONDITIONS OF USE</p> <p>This is a LOW Tariff Band Car Park</p> <p>Tariff - As displayed on ticket machine</p> <p>No return within 1 hour</p> <p>Clearly display a valid ticket bought at the time of parking or purchase a parking session using our mobile payment provider</p> <p>No allowance will be made for people to leave the car park to seek change</p> <p>Tariff applies for each parking bay used</p> <p>Pay and display bays marked with </p> <p>This car park is currently free after 3pm</p>	<p>This car park is patrolled by Cheshire East Council Civil Enforcement Officers.</p> <p>Have you removed any valuables and secured your vehicle?</p> <p>Cheshire East Council does not accept any responsibility or liability for loss or damage to vehicles or their contents.</p> <p>Parking is not permitted in any other area of the car park other than wholly within a marked bay,</p> <p>Do not park on yellow lines or hatchings.</p> <p>No HGV parking, only cars and light goods vehicles up to 3.5G.V.W.</p> <p>Tickets are not transferable between car parks.</p> <p>Failure to comply with any of the conditions may incur a Penalty Charge Notice.</p> <p>Payable at either £50 or £70 depending on the contravention.</p>
<p>A full list of contraventions for which a Penalty Charge Notice may be issued, along with Terms & Conditions, can be found on our website: cheshireeast.gov.uk</p> <p>For further information, help and advice call - 0300 123 5020</p>		

It seems that when the signage was produced, charging was thought to be until 6pm. However, car parking is actually free after 3pm as indicated by the paper sign alongside the main notice.

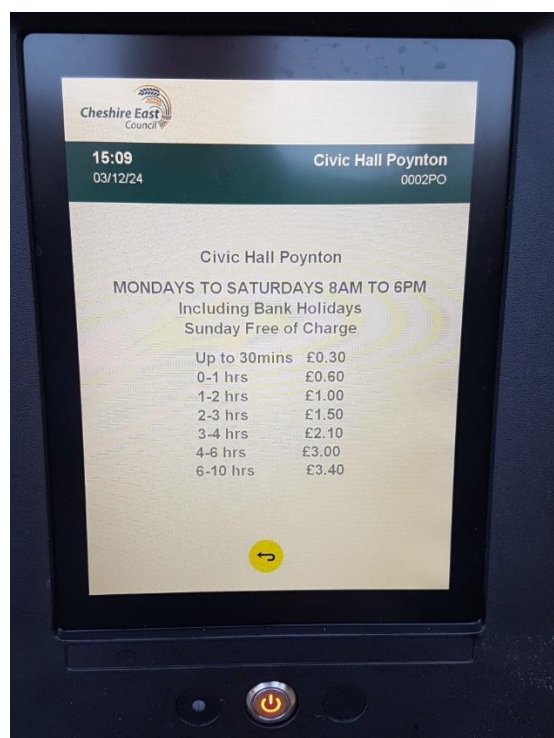


It is also free all day Sunday.

The main sign says that the Tariffs are displayed on the ticket machine. Whilst this is true, the route to displaying them is not very obvious. You press the red “start” button and then on the next screen press the “information” button which is a letter “i” in a yellow circle.

Payments can be made in cash, card or using the RingGo app.

The information presented here is thought to be correct at the time of writing. However, it cannot be guaranteed that this will not change with time so it is important to check on the current rules when you arrive in the car park.



And finally, the Poynton u3a committee would like to wish you

**MERRY CHRISTMAS
AND
HAPPY NEW YEAR**